



# THE DEANERY

Church of England High School and Sixth Form College

## **Destination Data 2024**

### **Destination Data:**

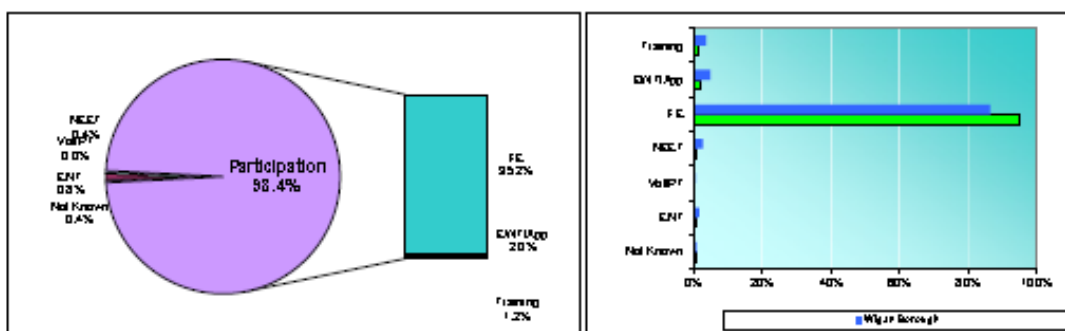
Our careers strategy and programme help our students to develop personal and employability skills which in turn means that our students make positive transitions and achieve good destinations. All students have a one-to-one careers guidance interview, beginning from Y9 onwards. Students who are in care, SEND or deemed vulnerable are prioritised, however every student has at least one such face to face before the end of the spring term in year 11 and at least 2 individual guidance sessions in the 6<sup>th</sup> form. Students who are vulnerable or are lacking aspiration have multiple guidance sessions to support them as they progress through school.

### **Our destination data is used to:**

- Determine where students go after leaving School & 6<sup>th</sup> Form
- Track subjects' students go on to study, as well as employment areas, courses, and apprenticeships.
- Track actual destinations with intended
- Ensure that all students in Y11 prior to leaving have completed at least one application to post 16 learning
- Crossmatch intended destinations with appropriateness of provision based on our knowledge of the student and tracking of careers aspirations over the five year whilst at school
- Track students who were identified as being at greater risk of NEET and liaise with Aspiring Futures to offer additional support
- Offer contact with students once they leave School so further support can be provided through the summer or at a later stage
- Celebrate the success of our students with staff, parents/carers and local community
- Raise the career aspirations of students currently in school through examples of past pupils
- Inform our careers provision
- Identify courses and opportunities so that our careers leader is up to date with the changing landscape
- Adapt our careers programme to offer a range of opportunities to students

We liaise closely with Wigan Aspiring Futures who produce Annual reports based on our Year 11 student destinations:

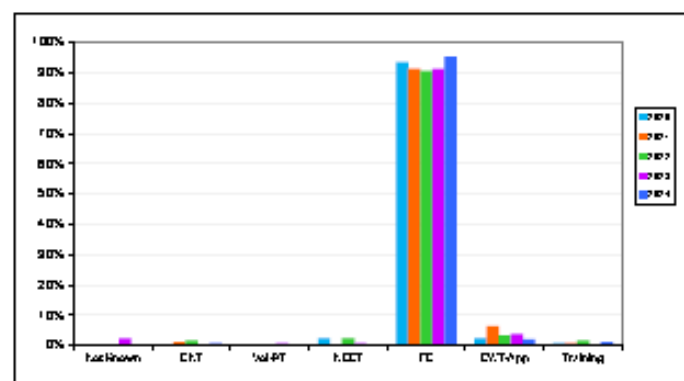
## Destination Data



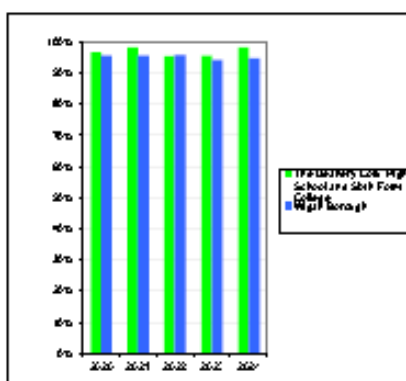
| Activity                                   | The Deanery CoFE High School and Sixth Form College | Percentage | Wigan Borough | Percentage |
|--|---|------------|---------------|------------|
| Not Known                                  | Not Known   | 1          | 29            | 0.70%      |
| Employment with no Training                | CVT   | 2          | 65            | 1.56%      |
| Voluntary & Part Time Activities           | Vol/PT  | 0          | 17            | 0.41%      |
| NEET                                       | NEET  | 1          | 108           | 2.58%      |
| FE   | FE  | 238        | 3908          | 86.50%     |
| Employment with Training (Apprenticeships) | CVT/App   | 5          | 159           | 4.77%      |
| Training                                   | Training  | 3          | 145           | 3.48%      |
| Grand Total                                |   | 260        | 4171          |            |

## Historical Data

Destination



Participation



|      |           |  |                                  |      |       |   |          | Participation                                       |               |
|------|-----------|--|----------------------------------|------|-------|---|----------|---|---------------|
| Year | Not Known | Employment with no Accredited Training | Voluntary & Part Time Activities | NEET | FE    | Employment with Accredited Training/Apprenticeships | Training | The Deanery CoFE High School and Sixth Form College | Wigan Borough |
| 2020 | 0.0%      | 0.4%                                   | 0.4%                             | 2.5% | 93.4% | 2.5%  | 0.8%     | 93.4%   | 86.7%         |
| 2021 | 0.0%      | 1.2%                                   | 0.0%                             | 0.4% | 91.2% | 6.4%  | 0.8%     | 91.2%   | 86.7%         |
| 2022 | 0.4%      | 1.6%                                   | 0.0%                             | 2.5% | 90.5% | 3.3%  | 1.6%     | 90.5%   | 86.8%         |
| 2023 | 2.4%      | 0.4%                                   | 0.8%                             | 0.8% | 91.2% | 4.0%  | 0.4%     | 91.2%   | 86.8%         |
| 2024 | 0.4%      | 0.8%                                   | 0.0%                             | 0.4% | 95.2% | 2.0%  | 1.2%     | 98.4%   | 84.3%         |

2024 Participation rates have increased on previous year and significantly above the Wigan average. There was an increase in the number of students progressing into FE and were again above the Wigan average which has seen a decline in apprenticeships this year. The percentage of NEET has decreased again and is significantly below the Wigan average.

**6th Form destination data is collected and tracked inhouse.**

|                            |                       |                   |
|----------------------------|-----------------------|-------------------|
| August 2023 data collected |                       |                   |
| <b>Destinations</b>        | <b>No of Students</b> | <b>Percentage</b> |
| University                 | 49                    | 63.64             |
| Apprenticeship             | 2                     | 2.6               |
| Employment                 | 4                     | 5.19              |
| Others                     | 9                     | 11.69             |
| Unknown                    | 13                    | 16.88             |
| Total                      | 77                    | 100               |

Both sets of data reflect the success of our careers programme and the effectiveness of our career's guidance.